



Support for Early Learning and Families

***Working together to build a  
community that nurtures the full  
potential of our youngest children***

# When & why SELF was formed

A public – private collaborative formed in 2001

## Founding Partners:

*Clark College*

*Clark County Community Network*

*Clark County Health Department*

*Education Opportunities for  
Children & Families*

*Educational Service District  
112*

*WSU Vancouver*



# SELF vision

## Clark County will be a place where

- Our youngest children and their families are valued
- All citizens work together to build a community that puts early learning services on a par with
  - *the public school system*
  - *public safety*
  - *public health*
- Early learning initiatives are supported with the investment of time and financial resources



# SELF

## Values and Principles

- Universal access
- Two degrees of separation
- Single points of entry in caring and connected neighborhoods
- Family empowerment
- Comprehensive services
- Relationship-based collaborations

# Current **SELF** partners

---

As of March 2007 there are 20 SELF Partners:

- *Arc of Clark County/PRIDE for Kids*
- *Battle Ground School District*
- *Children's Home Society*
- *Clark College*
- *Clark County Community Network*
- *Clark County Health Department*
- *Columbia River Mental Health Services*
- *Division of Child Care & Early Learning*
- *Early Choice Pediatric Therapy*
- *Educational Opportunities for Children and Families*
- *Educational Service District 112*
- *Evergreen School District*
- *Fort Vancouver Regional Library District*
- *SW Washington Child Care Consortium*
- *SW Washington Medical Ctr.*
- *Vancouver Children's Therapy Center*
- *Vancouver Housing Authority*
- *Vancouver School District*
- *Washington State University Vancouver*
- *YWCA of Clark County*

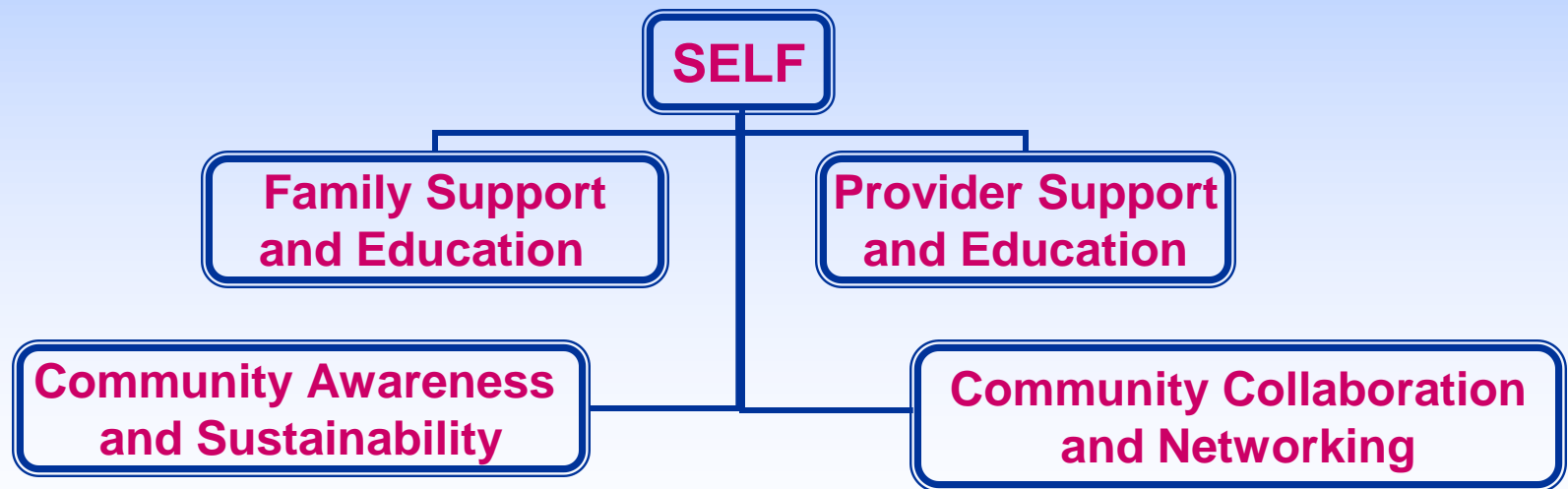
# SELF

## Supports system development

- Results from the 2003 comprehensive assessment found:
  - *The current system is fragmented*
  - *Significant needs go unmet*
  - *Parents and providers are unaware of existing resources*
  - *Existing system is difficult to navigate*

# What SELF does

- As the “go to” place for early learning systems work in Clark County, SELF brokers and leverages resources, both financial and human.



# Family Support and Education

---

## ■ *Neighborhood-based*

---

- *Infant and Toddler Story Times and Resource Kits*
- *Parent education and support groups (PAT program)*

*Located at:*

- *Fruit Valley and Hazel Dell (Vancouver School District)*
- *Image and Silver Star (Evergreen School District)*
- *Yacolt (Battle Ground School District)*





# **Provider Support and Education**

---

## **Provider Support**

---

- ***Clark County Resource Team***
- ***FVR Library System***
- ***Family Home Provider Networks***

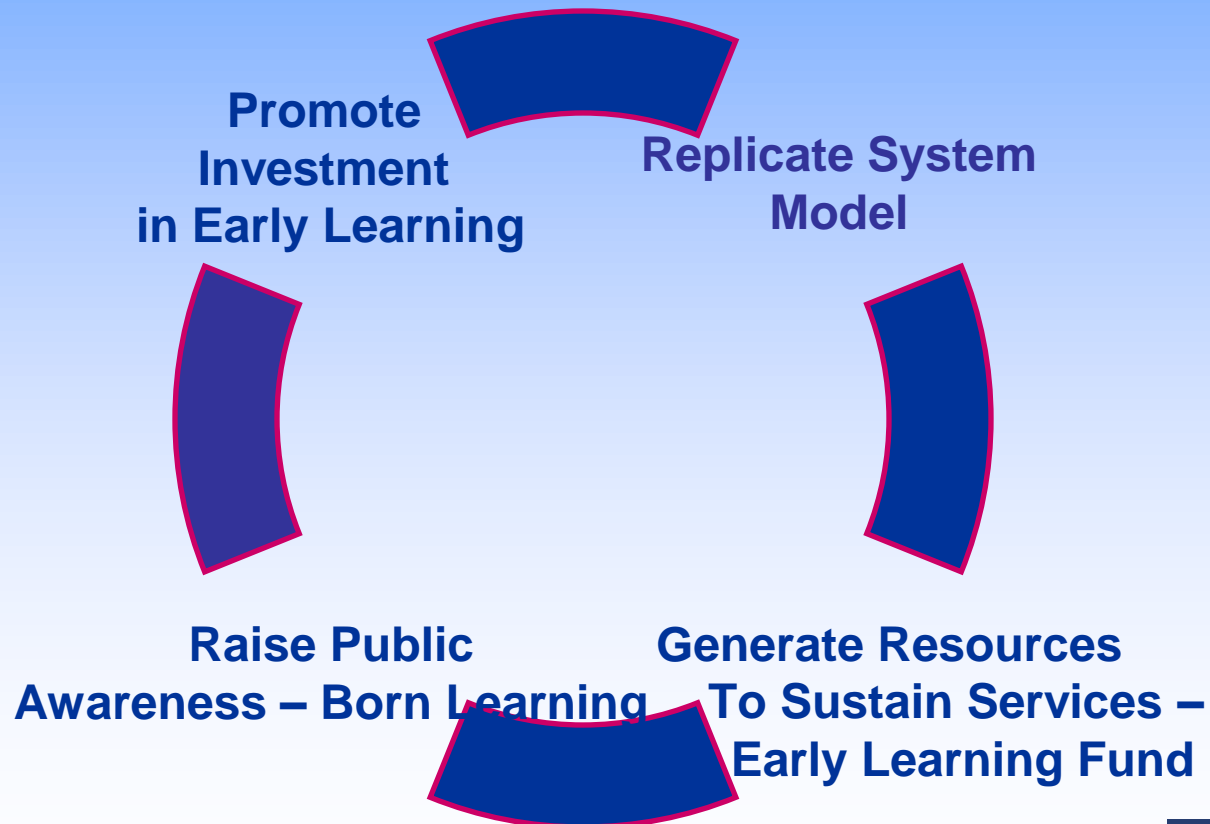
## **Provider Education**

---

- ***Regional Tapestry Conference***
- ***STARS trainers***
- ***Family Home Demonstration Project***

# Community Awareness & Sustainability

---



# bornlearning Clark County...

Increases awareness

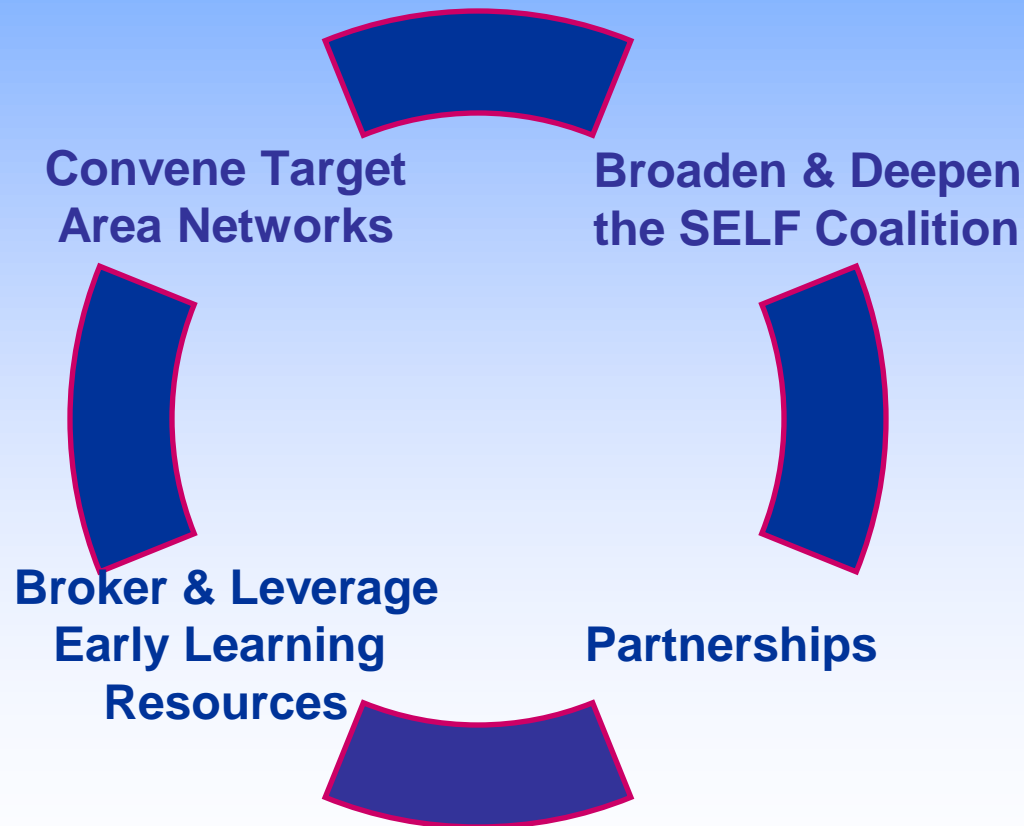
Provides information

Connects parents to  
resources



# Community Collaboration & Networking

---

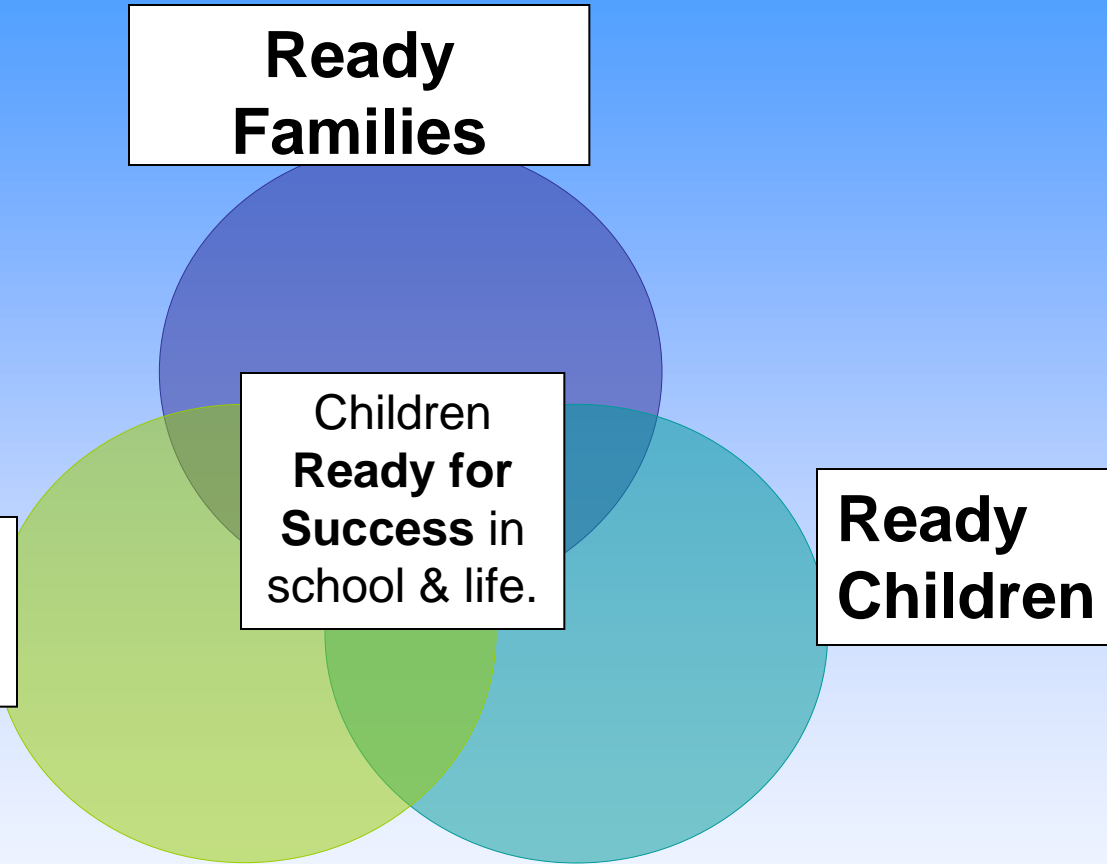


**Ready  
Families**

**Children  
Ready for  
Success in  
school & life.**

**Ready  
Children**

**Ready  
Schools**



# Ready Families

*Empowering families to support the health, wellness and well-being of their young children*

- Continuum of home visiting service programs.
- Parent empowerment strategies that link parents to resources.
- Enhance community awareness.
- Developmental screening & infant mental health.



# Ready Children

*Enhancing the quality of early learning care and development so all children thrive in positive environments.*

- Family care Provider Networks
- Professional development.
- Family, friend and neighbor care.
- On-site support and mentoring.
- Quality Rating and Improvement System (QRIS)



# Ready Schools

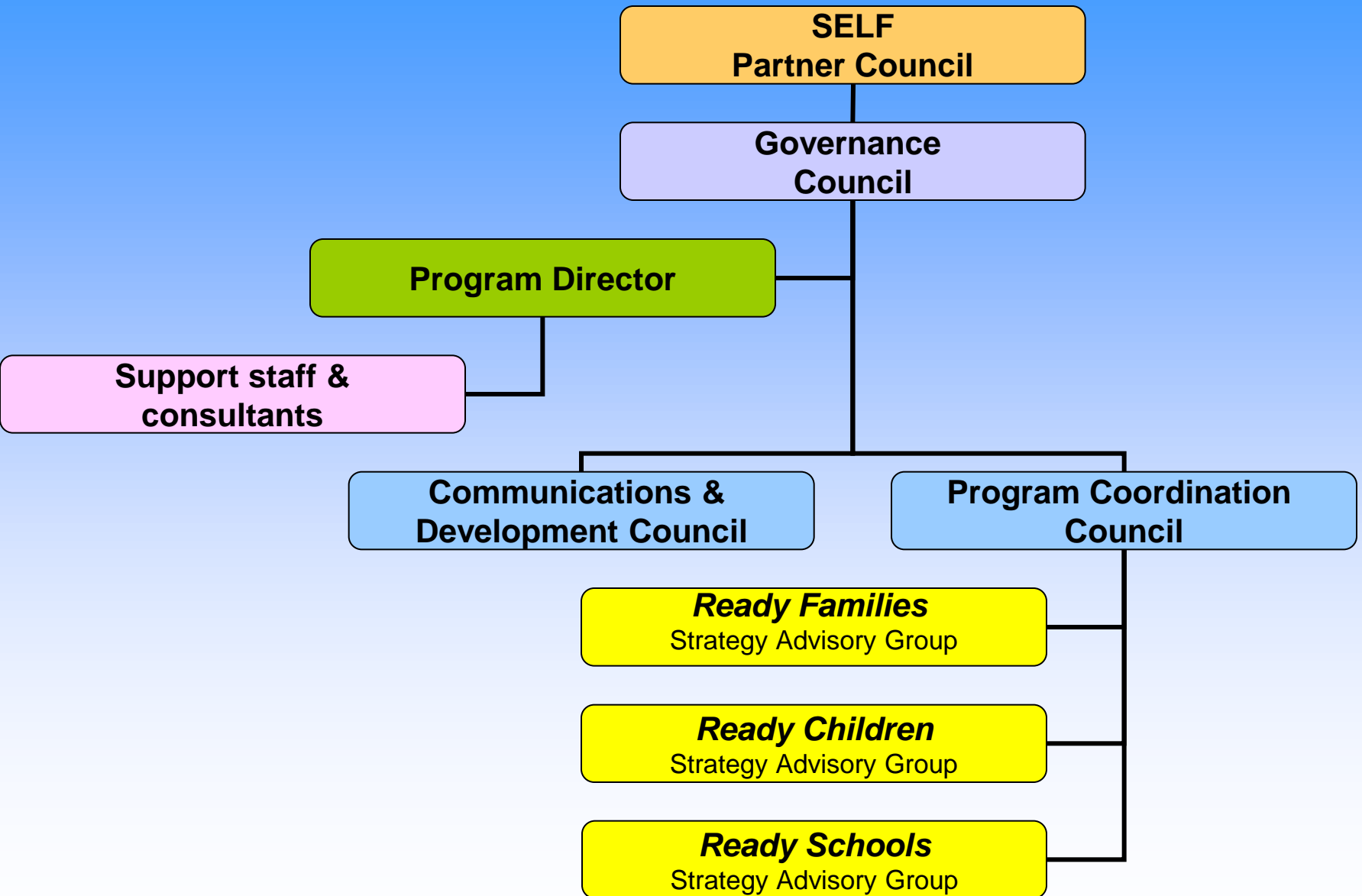
Getting school ready so children experience successful transitions with the support of family, school & community.

- Kindergarten transition teams & services
- School-based Read and Plays
- Outreach to parents and early learning care providers.
- Kindergarten assessment





# SELF Governance Model (July 2007 & Beyond)

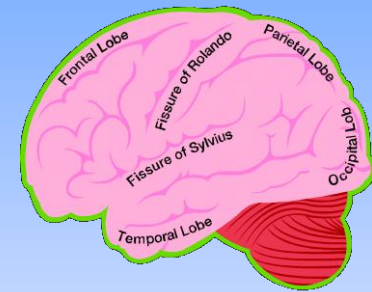


# SELF

## benefits Clark County

- The best investment we can make is in the lives of our youngest children.

- *Major brain development occurs by age six*



- Quality Pre-Kindergarten services save money

- *Studies show that for every public dollar spent on early childhood development our society returns \$7 - \$17 over the child's lifetime (Reynolds, Temple, Robertson & Mann, 2002).*



# SELF

## benefits Clark County

- Increases parents' and providers' access to community services
- Improves the quality of early learning care
- Strengthens parents' ability to support their child's development
- Ensures that every child is ready to succeed in kindergarten
- Builds connections between
  - providers
  - parents
  - the public school system



# To succeed **SELF** needs...

## Time & expertise

### ■ Involvement with

- SELF projects
- SELF committees
- Individual volunteer efforts

## Money & resources

### ■ Provide

- Monetary donations & scholarships
- *Matching funds*
- *Contribute to the Clark County Early Learning Fund*

# **SELF** Financial Support

---



**Foundation for Early Learning**

**Clark County Early Learning Fund**

**Department of Early Learning**



**Community Foundation of  
Southwest Washington**



**United Way of the Columbia-  
Willamette Focus Funding**

*Readiness to Learn*

**Readiness To Learn  
(Office of Superintendent of Public  
Instruction, State of Washington)**



*For more information:*

[www.SELFWa.org](http://www.SELFWa.org)

*(360) 750-9735*